

# THAT MAGIC Ingredient!

Which every Home Improvement  
or Property Maintenance Expert  
Cannot Do Without



Discover at least  
**11 different ways** to achieve  
**specific and magic results!**

A "must have" for any DIY enthusiast

*by Brendan Igoe*

# THAT MAGIC Ingredient!

Which every Home Improvement  
or Property Maintenance Expert  
Cannot Do Without



*by Brendan Igoe*

Owatrol... The Original © Igoe International Ltd 2014  
All rights reserved

## Contents

Probably The Most Amazing Property Maintenance Product Ever Found In A Can!	4
Background:	5
Eleven Great Applications / Uses for Owatrol Oil:	6
1. Makes Oil Based Paint or Varnish Stick Like Glue – No Peeling or Flaking	7
2. Makes Oil Based Paint or Varnish Flow Out With No Brush Marks or Streaks.	8
3. When Added To Any Oil Based Paint Or Varnish, Gives Better Hiding Power And Coverage.	9
4. When Added to Oil Based Paint (up to 90%) Makes a Penetrating Stain (any colour)	10
5. When Used As A ‘Thinner’ Does Not Evaporate, Thin Or Dull Your Paint Like White Spirit.	12
6. You Can Paint Faster and Easier and Still Attain A Far Better Finish When Owatrol Oil Is In Your Oil Based Paint	13
7. Unbeatable As a Rust Treatment and Preventative... Here’s why	14
8. Drives moisture out of ‘soft’ wet wood, example wooden window sashes, fascia’s etc., ideal for refurbishment.	20
9. Used alone on interior wooden panelling Owatrol Oil gives a lovely rustic natural appearance	21
10. Use to waterproof any porous surface	22
11. Allows you paint over galvanised surfaces with no paint peeling problems	22
Reward	23
About the author	23

## Probably The Most Amazing Property Maintenance Product Ever Found In A Can!

*If you maintain a home, property, machinery, classic cars or anything that needs repairs or upkeep from time to time – you will want to know about this!*

Ever since the stone age, taking care of your home / property has been a priority for most people, and now more than ever, spiraling costs and downward pressure on incomes would suggest that anything you might come across which saves you money and a load of trouble, is to be welcomed. One such specialist product is now becoming more readily available and it is called Owatrol Oil.

Owatrol, a multi-purpose, industrial and property maintenance product is already known and treasured by thousands of professional painter decorators, other trades people and a growing number of fans who use it for an amazing array of applications.

One problem with Owatrol is... it does so many diverse things so extraordinarily well that most people rarely if ever get a chance to comprehend or benefit from its vast array of amazing applications.

This E-Book has been written to explain the many benefits and applications of Owatrol oil to existing (and potential) users and show you how it saves you a host of irritating property maintenance problems you can never seem to find solutions for when you need them. Enjoy.



## Background

Owatrol Oil (described as a Paint Conditioner & Rust Inhibitor on the can) is made from a secret blend belonging to a privately owned family business and was first invented or discovered back in the 1930's by a painting contractor who used it initially as a 'tool' to make his oil based paints flow and perform better in a wide variety of weather conditions.

Over the decades numerous other diverse applications have been discovered and more uses are being discovered all the time.

### How does Owatrol Work?

Because of its powerful penetrating (and adhesion) abilities it can perform many extremely useful functions.

To see & understand how it penetrates, (assuming you have some Owatrol) do this simple 5 minute experiment or test. Get a piece of plain unprinted cardboard about 6" or 15cm square & place it flat on a table or bench.

Gently place a drop of water on the cardboard and then place a drop of Owatrol Oil about 6mm to 8mm (1/4") away from the water drop. You will observe that that despite the fact that we all know that water is 'wet' it still does not penetrate down into the cardboard (eventually it will) and you will see that unlike the nearby 'ball of water' the drop of Owatrol oil will begin to soak in and penetrate immediately.

[This observation is referred to as Surface Tension.]

Watch what happens when the Owatrol oil drop reaches and 'touches' the drop of water! It encircles the water droplet and even gets under it to the point where the water droplet can easily be rolled over on to the adjacent & now oil soaked cardboard surface. (With this little demo you can even get water to float on top of oil!) This simple demonstration proves that Owatrol oil is a lot 'wetter' than water, and that in turn proves that Owatrol Oil can get into places where even water cannot get into.

This fact as you will see later has many implications and subsequent benefits for anybody involved in painting / decorating, restoration, refurbishment, DIY etc.

**Basic outline:** Owatrol oil can be used by itself or it can be added to any oil based 5undercoat, primer, gloss, eggshell, satinwood, varnish, etc. for various effects.

## Eleven Great Applications / Uses for Owatrol Oil

Not in any particular order and all references to paint / varnish are to oil based paints etc.]

1. Makes paint or varnish stick – no peeling or flaking.
2. Makes oil based paint or varnish flow out with no brush marks or streaks.
3. When added to any paint or varnish, gives better hiding power and coverage.
4. When added to paint (up to 90%) makes a penetrating stain / any colour imaginable.
5. When used as a 'thinner' does not evaporate, thin or dull the paint like white spirit.
6. You can paint faster and easier and still attain a far better finish.
7. Unbeatable as a rust treatment and preventative.
8. Drives moisture out of 'soft' wooden window sashes, fascia boards etc., ideal for refurbishment etc.
9. Used alone on interior wooden panelling gives a lovely rustic natural appearance.
10. Use to waterproof any porous surface
11. Allows you paint over galvanized surfaces with no peeling problems.

## Makes Oil Based Paint or Varnish Stick Like Glue – No Peeling or Flaking

Any surface that has a history of peeling paint or varnish or will potentially throw off the paint can be successfully painted with outstanding long lasting results. Most common examples would be window sills, wall or pillar cappings, fascia boards, sun facing doors and windows, garden ornaments, galvanised steel railings, gates, dusty concrete floors etc.

Golden rule is... wire brush off any loose particles of paint, mix in about 25 to 40% Owatrol oil into first coat of paint and apply. Add about 15% Owatrol oil into finish coat for a beautiful finish – no brush marks.

By mixing in a strong mix of Owatrol oil (up to 30% or more – until ‘runny’) into the first coat (on a clean, grease-free surface) you can make any oil based paint or varnish stick like glue to what would normally be described as any ‘unpaintable’ surface without sanding, etching or other difficult, time consuming keying methods.

Example: Stainless steel, Aluminum, uPVC, Fiberglass, Copper, Brass, Tiles, Melamine and lots more. Always add some Owatrol into finish coats for best finish attainable. See below pictures of problems all easily solved by Owatrol Oil.



Owatrol Oil solves this peeling paint problem for good. Add to any oil based paint or varnish.



Makes paint stick to sills - no more peeling



Makes paint stick on galvanized railings

## Makes Oil Based Paint or Varnish Flow Out With No Brush Marks or Streaks.

Paints are manufactured to perform at their best in a certain given conditions / temperature.

Outside of that 'ideal situation' paint can become heavy and become more difficult to brush out or roll. When Owatrol is added to the paint (used for better flow instead of the traditional white spirit) in those conditions, it makes the paint level out and flow properly and you can achieve a perfect, brush mark, streak free finish with little or no effort and in a lot less time; plus, your paint will go that bit further.



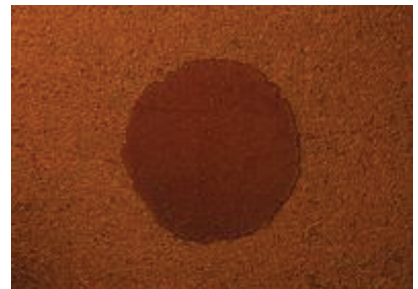
^  
Paints can be affected by temperature, wind etc. causing pull and drag. By adding Owatrol Oil you will eliminate this problem and get a brush mark free finish with little or no effort.



^  
Left - paint neat without Owatrol poor flow, uneven finish.  
Right - with Owatrol, much improved flow, better finish



^  
Drop of oil based primer, does not spread or penetrate.



^  
Same primer with Owatrol added - spreads better and penetrates.



## **When Added To Any Oil Based Paint Or Varnish, Gives Better Hiding Power And Coverage**

As you know from experience when you add white spirit into any oil based paint or varnish, yes, it makes it flow out better and faster, but at a cost of lower hiding power / opacity, coverage (area covered by that can) and usually the finish dulls or goes flat in a short time.

Owatrol Oil added to the paint, oddly enough does the complete opposite to what white spirit does... it increases hiding / opacity, coverage, (& grip – see above) and helps keep that shine / finish for years without dulling. Of course, you also get that job done much faster and with little or no effort. It is also superb when you need to change colour from one extreme to the other, i.e. white over black, yellow over black etc. You will save a few coats & a lot of hard work for sure.

Note: The modest cost of any Owatrol Oil used on the job will be easily recouped in extra hiding, extra coverage achieved and you get the job done faster with better results. Every drop you add to your paint adds to the paint (does not evaporate as does white spirit) to make it go further and with fewer applications. All the other benefits such as the fantastic, effortless, non-peel finish, faster work, ease of application etc. are FREE. Makes total sense!

## When Added to Oil Based Paint (up to 90%) Makes a Penetrating Stain (any colour)

Because of the massive penetrating properties of Owatrol Oil it can be used to great effect as a staining 'tool'. By this I mean, when you dilute any colour oil based paint, undercoat, primer or whatever with Owatrol (Note: Stronger hiding colours can be diluted to a higher ratio and the opposite with low hiding colours like yellows, reds etc., usually up to a maximum of 40%+/-) if you apply that to any porous surface such as concrete, stone, wood, brick etc., it pulls the paint deep down into the pores of that surface thereby acting like a solid colour 'stain'.

Some examples of this application as follows:

A concrete floor which raises clouds of dust when swept can be stained any colour you like thereby sealing in all the dust and obtaining a lovely hard wearing, painted, dust-free floor at the same time. (Not appropriate for forklift traffic etc.)



Used with floor paint

The same can be done on concrete patio slabs, garden ornaments, brickwork, roof tiles, wooden shed or fencing, wooden garden furniture or any porous substrate you can think of.



Bench before Owatrol 'Staining'



After Owatrol 'Staining'

Some people use this method to transform old wooden garden benches, tables etc. with a colour to match the door / windows etc. Above two garden pieces done in this way.

Here below is another variant on above method. This time the customer was trying to blend in a new wooden chalet with an old adjoining stone structure because she felt there was too much of a clash. She wanted to lighten the colour of the wood but yet see the wood. We suggested a 'white stain' comprised of about 90% of Owatrol Oil and 10% white oil based paint.

This system can also be used if you want to stain wooden floors. For example, let's say you want to change a wooden floor from clear varnish look to any colour oil based stain. Sand the wood to open the pores, vacuum dust out and apply paint as described above.



Original wood tone contrasted quite a lot with stone building behind.



After coating the chalet with 'white stain' above, the building blended in better.

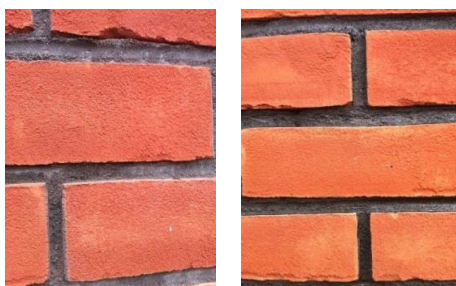


If you want a durable, non-peel, washable, solid colour finish on your floor boards, this is probably the best method known to achieve it.

Make your floor red, white, black or whatever. Will not peel or flake. That finish would be considered washable.

Note: If you need to revert back to a clear finish later you will need to sand out the colour thoroughly, so before you go down that road I recommend that you do a test first on a piece of wood etc. and see if you like it.

You can of course over paint any colour with a different colour. Just add about 20% Owatrol oil into a coat of whatever colour / oil based finish you choose and apply.



This home owner wanted the mortar between his bricks refreshed up as the original black dye had faded. He used the Owatrol 'stain' idea, mixed some black gloss into Owatrol Oil and carefully applied it to the mortar.

## **When Used As A 'Thinner' Does Not Evaporate, Thin Or Dull Your Paint Like White Spirit.**

Owatrol Oil is an environmentally friendly painting aid also. This is because unlike white spirit, it does not evaporate up into the atmosphere. The Owatrol stays in and is added to the paint body. Paint thinned or diluted with white spirit (which does evaporate) actually dulls the paint over a relatively short period of time and loses its lovely finish.

This is because the white spirit 'cuts' or 'breaks down' the inherent high quality ingredients in the paint and diminishes its performance. Yes, you will still need some white spirit to clean up your brushes, any paint blobs, splashes etc. when the job is done. For an unbeatable finish and performance, adhesion, ease and speed of application add Owatrol Oil to your (oil based) paints instead of white spirit.





## You Can Paint Faster and Easier and Still Attain A Far Better Finish When Owatrol Oil Is In Your Oil Based Paint

You will find that you can paint about 30% faster with no lessening of finish quality. On the contrary, even though you can get that paint or varnish on the job substantially faster, the finish will be even better. This is because of the fact that Owatrol causes the paint to 'flow & level out' more evenly, no high or low spots, thereby giving a beautiful even finish every time, even in extreme weather conditions, cold or hot. You can even get away with rolling gloss etc. on to doors where brushing would normally be the method of choice for a better finish. Even if at first the paint looks heavy on the surface, after a few minutes it 'lies down' or flows out to give a perfect finish every time. Only add enough Owatrol oil to achieve that nice paint flow 'feel' and no more.

Painting is substantially easier on your wrists because of the huge reduction in pull and drag, so you can enjoy the experience rather than having to endure it.





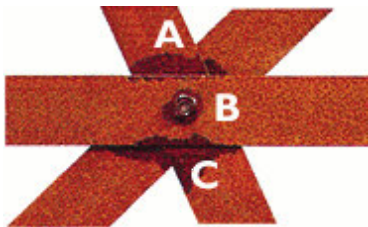
## Unbeatable As a Rust Treatment and Preventative... Here's Why

As you can see above, Owatrol Oil gets into places no other rust treatment can get into. They all sit on the surface and are unable to deal with the hidden rust within.

More on this process below...

Because of its unique deep penetrating ability, Owatrol Oil has been found to be one of the greatest solutions ever discovered for the scourge of rust on steel & iron. Please allow me to explain.

Firstly, in simple terms (no big words or tech speak) rust develops as a result of the coming together of moisture, oxygen and ferrous steel / iron. A reaction takes place which ultimately causes the steel to break down into the brownish material we call rust.



< This photograph represents one of the most challenging rustproofing scenarios you can imagine and clearly illustrates the penetrating power of Owatrol.

Three overlapping steel sections A, B, C covered in rust on what you can see as well as hidden in between the sections out of reach. Observe Owatrol added to the upper edge of section B, penetrates in between the steel sections, re-emerges out beside the nut (centre)

& continues down to emerge on to C from the underside of section B

## How Does Owatrol Oil work to Treat / Remove Rust?

It works in a very simple and logical way. When applied to a rusty surface, the Owatrol Oil (which is a lot wetter than water) penetrates all the way in to the 'good steel' at the back, and while so doing, it displaces all traces of moisture and oxygen / air [rust food] from within the rusts pores and takes their place drying out to a clear varnish-like, flexible membrane.

In virtually all cases, hidden steel joints, crevices, pores etc. contain pockets of moisture and oxygen and despite any known method of removal, such as wire brushing, sand or shot blasting, mechanical guns etc., these 'pockets' cannot be reached which means that despite your best efforts, any paint job will result in a fresh outbreak of rust again in those crevices and pores in no time at all.

You might imagine that on a good dry day those pockets or pores will not contain moisture or oxygen... You would be very surprised to discover that usually, despite how good the weather is, those pockets of moisture / oxygen are still in there. Take the example of the mirror in your bathroom after a shower etc. It becomes fogged up with what is clearly moisture, but yet it will not fall down off the glass because it is not heavy enough.

If you rub one of your fingers along the mirror you will observe that the moisture will gather into a few droplets of water which will have become heavy enough to run down the glass. That is exactly what Owatrol Oil does inside the rusts' pores. It pushes out and displaces all traces of moisture and air / oxygen (aka rust food) taking over and occupying those pores completely.

Like water in a glass, when full it is full and you cannot add any more. Same with the inside of the rust pores, when they have become full of Owatrol oil, they cannot take in anything else such as moisture or even oxygen because the pores are totally full of the oil, which in turn means that the rust, starved of its vital food, cannot return for a very long time indeed. There are many other better known 'rust solutions' out there but none of them can do what Owatrol Oil can do. They all tend to go over the problem. Owatrol Oil deals with the real underlying core issue... removal of 'rust food' or the root of the problem from places no other treatment can get into, thereby preventing return of the rust. After several years, movement / expansion / contraction, UV rays, wear & tear etc. will begin to reduce the effectiveness of the Owatrol protection and rust will begin to reappear. Nothing, as we know lasts forever.

## Best method or practices for treating and preventing rust using Owatrol Oil

To keep this simple I would describe the two main rust types you will encounter, Heavy Rust Scale and Tight Rust with not much loose or heavy scale. We will deal with the worst case first.

### Heavy rust scale

Traditionally one got a scraper and hammer or other mechanical means to remove heavy rust scale prior to any repainting job. This is a tedious, blister raising, labour intensive process which can be drastically simplified with Owatrol Oil. Here's how...

**Step one:** Firstly if you are working on steel railings etc. that are mounted on a granite stone base etc., cover the stone with plastic sheeting to prevent the Owatrol dripping down on to it from the steel above.

Using a 50mm approx. paint brush (or a spray device) saturate a section of the heavily scaled rust totally with Owatrol oil working from the top down.

Leave for half an hour or so to soak in fully and then, using a standard 2" / 50mm scraper or even a putty knife you can remove the scale with the greatest of ease. Anything loose will simply fall off. Any rust left behind, as long as it is firm can be regarded as part of your future layer of the steel's protection because it has now been saturated with Owatrol Oil (moisture and oxygen = rust food has been displaced by the oil).



^  
Cover Granite or base to prevent Owatrol getting on same



^  
Saturate with Owatrol. Wipe off any excess to avoid 'skinning'

Note: after descaling, check to make sure all parts of the steel are well soaked with Owatrol Oil. IF you find any sections or places that are not soaked properly or are

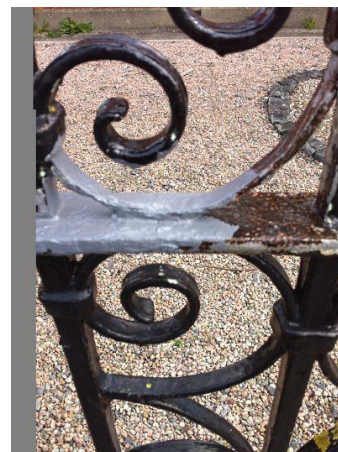
dry to the touch, reapply Owatrol Oil to those areas to ensure complete saturation. Failure to do that will negatively affect subsequent performance. Using a dry paint brush or similar, sweep away any loose particles of rust that have collected on the flat steel sections as soon as possible after descaling. Wipe off any excess Owatrol left 'ponding' (See above left) on horizontal surfaces to avoid 'skinning' during drying process.

**Step two:** can take place any time after 24 hours, even after days or several weeks if weather is not favourable. Reason is, Owatrol oil has taken the place of moisture and oxygen and sealed up all the pores thereby preventing any more water etc. getting in. You have two choices at this point.

a) The quick / cheap way is to apply a gloss coat of your choice with about 25% Owatrol Oil added in. This option will prevent rust for a few years even though it is a cheap, quick job.

b) The best method is to apply a primer coat with about 25% Owatrol oil mixed in followed in a day or two by a top coat with about 10 to 15% Owatrol Oil mixed into it. This is the method which offers maximum protection. Expect double or triple the performance compared with the cheaper option just above because of the extra 'padding' or protection layer the primer adds.

c) Two top coats with Owatrol Oil added will add even more life to the job. Owatrol Oil works very well when used in conjunction with some well-known brands of oil based rust treatment. It does not work in conjunction with Hammerite® or other 'hot' solvent based or two pack paints. One option, should you wish to use Owatrol Oil to deal with the rust, and use Hammerite® or any solvent or two part paint as your finish is to apply a coat of Owatrol CIP [see Owatrol CIP on [www.igoe.ie](http://www.igoe.ie)] over the dried layer of Owatrol Oil. This acts as a barrier coat and enables the non-oil based paint / finish to be applied without any adverse reaction.



Oil based grey primer and Owatrol mix form a powerful extra layer of protection

With Owatrol in the paint +/- primer, the finished paint job



d) Another option, after scale removal is to apply two top coats of Owatrol Aluminum RA85, [See [www.igoe.ie](http://www.igoe.ie)] a silvery, highly flexible coating that will expand and contract with the steel. Lasts for years. Sticks to practically anything!



## Tight Rust with little or no loose scale

For best results, saturate the tight rusted surface with Owatrol oil and allow to dry. (No descaling or wire brushing etc. necessary) Follow with various options as outlined above.



^  
Owatrol applied directly to tight rust

## Solutions to Other Rust related Problems

Here are a few examples of other common rust problems you can cure with Owatrol Oil.

Rusted nail heads, hinges, aerial or wall hanging brackets, screws, parts, frost damaged / exposed steel reinforcing bar in concrete such as sills, walls etc. Ride on mowers, tools, cars and machinery. Hay sheds.



^  
Broken anchor bolt rust stopped with Owatrol

## Nail heads

Using a small brush, dab on some Owatrol Oil neat to saturate, envelope & seal the nail head. Paint over with oil based paint and Owatrol mix to match if required.

## Hinges etc.

Exterior mounted steel hinges / fixtures on wooden doors etc. frequently rust on the inside between the back of the hinge and the wood because moisture runs down the door in behind the hinge and causes the steel to rust, resulting in unsightly rust stains streaking down the wood surface below. Apply Owatrol oil to top of hinge allowing it to soak down behind the hinge until you see it emerging out the bottom. Add to paint etc. when dry.

## Steel bolts, wall brackets in concrete or brick walls

As above, apply Owatrol oil neat with small brush to steel part where it enters the wall. Owatrol oil will follow the steel into furthest point and seals it up against subsequent moisture / oxygen ingress which causes the rust to develop. Paint over that for best results. Rust stains can be easily removed with another Owatrol product... Net-trol. [[www.igoe.ie](http://www.igoe.ie)]



## Concrete with exposed, frost damaged, steel reinforcing bar

Sometimes you will encounter a concrete wall, sill, lintel etc. where water ingress and subsequent frost damage has caused the concrete to crack or even split into a crevice where you can even see the buried (rusty) steel reinforcing bar. Solution is as follows.

If only a crack, feed Owatrol oil into the crack

and allow to dry over a few days. That can be filled and painted later. If crack has deteriorated into a channel with steel re-bar clearly exposed, gouge out the loosened concrete section with a flat tip screwdriver or a steel

chisel. Sweep out any loose particles of dust / concrete. Saturate the channel with Owatrol Oil and you will see that the oil will follow the line of the steel bar; even in underneath the concrete (further than water could ever reach). When dry in a few days, fill the channel with some sand and cement mix, level / finish off. When concrete had dried, paint as usual, preferably with oil based undercoat/paint with Owatrol oil in them. (If repainting with water based paint – stir in 25% E-B, another Owatrol product, [www.igoe.ie] into first coat for maximum grip)

## Ride on mowers, tools and machinery

Rust is a serious problem on the underside of ride-on or even ordinary lawn mowers as well as other tools and equipment that come into contact with wet grass etc. After use, or when you plan to lay up the tool etc., apply Owatrol Oil liberally to all exposed steel sections and that will stop it rusting over the winter keeping it in good order for next season.



Owatrol is probably the only long lasting solution to this frost damaged window sill. Owatrol on rebar cures rust.



Owatrol Oil is the perfect way to protect tools, mowers, machinery, etc.



## Classic cars, machinery etc.

Undersides of cars, vehicles, trailers, caravans, mobile homes and countless other such places are all subject to serious rust problems. Owatrol Oil and other Owatrol products will solve those problems. Saturate and paint as above. Owatrol Oil is a fantastic product for anybody into classic or vintage cars, boats, trucks, tractors, machinery etc. (See also point 2 just above)



< Helped restore 69 Cortina



Loved by classic enthusiasts

## Hay sheds / hay barns

Rural communities have had to suffer the scourge of rust & peeling paint on their hay sheds etc. for decades. Here are two huge benefits from using Owatrol Oil.

Used as a 'spot primer' over all the worst parts using a roller

Owatrol Oil stops rust on haysheds and stops oxide paints peeling, keeps shine for years without dulling or brush, Owatrol will seal the rust and provide a sound base for the oxide paint later. [If you are extremely particular and you are willing to do or pay for the work, apply a neat coat of Owatrol Oil over the entire surface and allow 24 to 48 hours to dry before next / top coat]



Owatrol is probably the only long lasting solution to this frost damaged window sill. Owatrol on rebar cures rust.

Owatrol can also be added into the Oxide paint to ensure powerful adhesion thereby ending the age-old problem of the paint peeling off, especially from galvanised surfaces. [New galvanised surfaces should be degreased thoroughly with cellulose thinners or left to weather for about a year at least prior to painting as above]

The Owatrol also helps seal up nail heads and overlapped sheets for longer life. Great also for where the girders go down into the ground, apply Owatrol Oil to Girder near where it goes down into the concrete and it will follow the steel down in behind the concrete thereby protecting the steel you cannot even see.

## Drives moisture out of 'soft' wet wood, example wooden window sashes, fascias etc. - ideal for refurbishment.



< Owatrol drives moisture out of wood adding years of life to window sash.

As you have read above, Owatrol Oil penetrates deeply into all porous surfaces, further than water can.

A common problem, especially on the bottom sash of window frames made of softwoods. Moisture which runs down from the glass above from condensation, (interior) or badly sealed (exterior) collects on the sash below and eventually gets into the wood causing it to rot and break down. This is also a common problem at wood joints such as on external fascia boards etc.

Solution: remove any loose paint or putty and saturate the wood over a period of time with Owatrol Oil. (Cut or scrape out any really bad bits of soft wood / can be replaced with filler later) If there are holes drilled at an angle into the sash to allow water escape to the outside, make sure you get Owatrol oil into those places also so that it will penetrate, line and seal the walls of those holes to prevent water ingress and subsequent damage. If you have a wooden sash for example which has become soft or 'punky' to the touch, saturate it with lots of Owatrol oil. That will push out all traces of moisture from the wood making it firm again. Remove any bad pieces (while still soft) and refill with an appropriate filler. If the section has deteriorated beyond salvage, replace that section and saturate the replaced wood with Owatrol Oil after fitting.

Allow to dry and repaint as normal. Use Owatrol Oil in undercoat and top coat for best results.

Swollen, wet MDF or timber can also be treated very effectively by saturating it with Owatrol oil as above.

## Used alone on interior wooden panelling Owatrol Oil gives a lovely rustic natural appearance

Owatrol applied neat to wooden panelling does not darken the wood and keeps it looking



Internal wooden panelling, beams etc. can be made to look very well by two coats of Owatrol Oil. Allow enough time (about 45 mins average) for first coat to soak in and then apply second coat while first coat is still wet.

You can apply Owatrol by any means you wish, brush, roll or spray or even a clean cloth. Any excess left after soakage has taken place should be wiped off for a uniform rustic finish. Many log cabins and wooden home offices come fitted with nice natural looking panelling inside and Owatrol Oil looks very well on such surfaces. Note: I do not recommend the use of Owatrol Oil for the insides of wooden saunas as we have not tried it out. Yes, of course it will soak and seal the wood but I'm not sure about odour, or other side effects.

## Use to waterproof any porous surface

Surfaces such as leather, chipboard, MDF, brick, render, stone, wood, plywood and any other porous material can be waterproofed by saturating it with Owatrol oil.

## Allows you paint over galvanised surfaces with no paint peeling problems

Owatrol Oil makes oil based paints stick to weathered galvanised steel. Scrape off any loose material. Add 25% Owatrol to any oil based paint - no more peeling!



Galvanised steel surfaces usually do not accept paint which means the paint usually peels off after a relatively short time.

Reason is because fresh galvanised surfaces have a greasy, slimy residue on the surface which paint cannot grip on to. Solution: Newly galvanised surfaces... Either, leave exposed for a minimum of 12 months or, where immediate paint job is required; wash thoroughly with cellulose thinners to remove the greasy deposits.

Afterwards, paint with about 25% of Owatrol oil in your first coat (metal primer or even top coat is ok) for extra strong grip. Some people go straight for a finish with 25% Owatrol oil mixed in. For best results, apply a primer or undercoat with 25% Owatrol oil mixed in followed by one or two top coats with about 10 to 15% Owatrol Oil mixed into that.

Ideal solution for galvanised gates, balconies, steel sheeting, hay sheds, or any galvanised surface.

## Reward

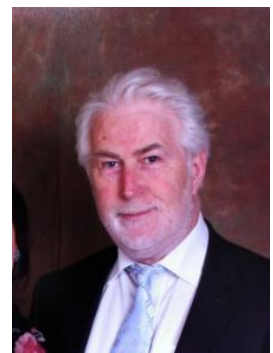
We offer a €50 voucher which can be applied against the purchase of any Owatrol product for any new use or unique & proven application for Owatrol Oil that you submit not mentioned in, or referred to in the above guideline. Photograph or other evidence supporting your submission will be necessary. Contact us through this website.

## About the author

Brendan C Igoe has been in the specialist product distribution business since 1978 and over that time has built up a strong reputation for finding many unique niche products and bringing them to the general market. One of his greatest finds over those years has been Owatrol Oil and its sister products.

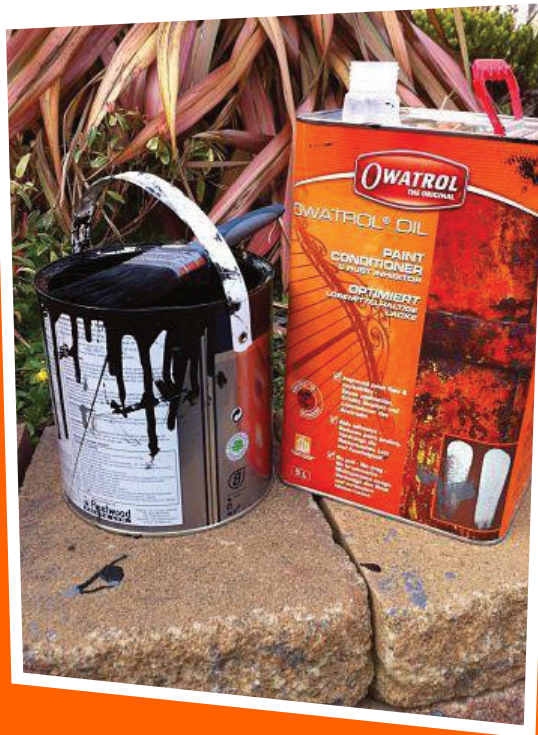
Since discovering Owatrol in 1996 he has interacted with hundreds of professional painter / decorators, specifiers, architects, engineers, restorers, semi-state bodies, builders, as advisor to many celebs/home & property owners and many others.

He has acquired an immense knowledge about these products and the numerous ways in which they can save people money, time and trouble. This article serves to explain in detail the multitude of applications and benefits of the Owatrol flagship product... Owatrol Oil.





THAT MAGIC  
Ingredient!



## The Perfect Partnership

Owatrol Oil and Oil Based Primer, Paint or Varnish. As used by top Professional painter decorators around the world. Cuts out Hard Work Saves Time & Money

Owatrol Oil and all other Owatrol products are distributed by Igoe International Ltd  
135 Slaney Road, Dublin Industrial Estate, Glasnevin, Dublin 11, Ireland

Contact Us: Tel:(01)8302250/8302226 Fax(01)8300770

**Website [www.igoe.ie](http://www.igoe.ie)**

That Magic Ingredient © Igoe International Ltd 2014  
All rights reserved.